

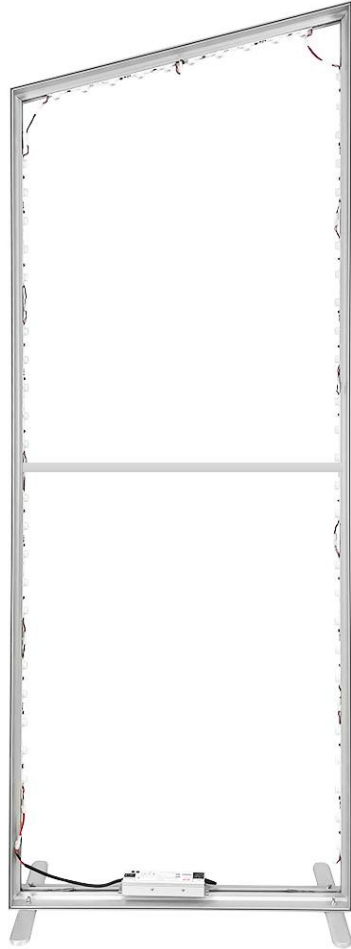


VAIL FREESTYLE 3x8 BACKLIT

Introducing the VAIL-120DB Freestyle 3ft x 8ft Backlit Aluminum Extrusion Lightbox Display, a cutting-edge solution for dynamic visual presentations. Crafted with precision and innovation, this display combines superior materials with advanced features to elevate your brand messaging to new heights.

The VAIL-120DB Freestyle 3ft x 8ft Backlit Aluminum Extrusion Lightbox Display sets a new standard in visual excellence and versatility. Whether at trade shows, retail environments, or corporate events, make a bold statement with this premium display solution.

OVERVIEW



- Features a 120mm wide (VAIL-120DB) aluminum extrusion frame with edge lit LED lighting (RESORT-LS)
- Freestanding double sided lightbox display
- Features dye sublimated SEG (Silicone Edge Graphics)
 - (2 graphics - 1 front/1 back)
- Top corners utilize our tool free variable angle corner locks (SKU: LOCK-018) which allows the top frame profile to mount at various angles
- Bottom Corners feature tool free Resort Corner Locks (SKU: RESORT-TFCRNR)
- Vertical profile sections are connected with Resort Tool Free Center Connector (SKU: RESORT-TFCNT)
- Middle horizontal strut (SKU: VAIL-MAM-40C) attaches with 4mm allen key (included with frame hardware)
- Aluminum feet (SKU: VAIL-FT16120) attach easily with bolts and wingnuts
 - Foot dimensions: 16" L x 2"W x 1/2" H
- Customization is available with available options:
 - Different top angle
 - Different frame size
 - Non-backlit

- **VAIL120DB-FS3x8-BLG2** (Double Sided Graphic Package)
 - Graphic Packages are only double sided
 - **VAIL120DB-FS3x8-BLGO1-FRNT** (Single Sided Graphic Only Front)
 - **VAIL120DB-FS3x8-BLGO1-BCK** (Single Sided Graphic Only Back)
 - Graphic Only option is for qty 1 print only (front or back graphic)
 - Customer will need to order qty 2 to replace both graphics on the frame
 - **VAIL120DB-FS3x8-BLHO** (Hardware Only)
 - Frame, feet, lights, wiring, transformer, and tool
- 

HARDWARE DETAILS



The lightbox frame is made from the VAIL-120DB Resort Extrusion profile. The VAIL-120DB is a 120mm/4.7in wide silver anodized aluminum extrusion profile designed for double sided graphic display and accepts 12mm x 3mm keder (silicone beading)



Each frame features 2 feet (VAIL-FT16120) which are 16in in length. Each foot attaches to the frame via 2 bolts w/wing nuts enabling a quick tool free installation.



Tool free corner locks (RESORT-TFCRNR) are utilized to connect the bottom corners of the frame. Simply slide the lock into the spines of the VAIL-120DB profiles and press down levers to lock them into place.

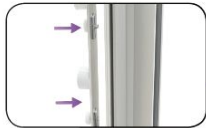


Variable angle tool free corner locks (LOCK-018) are utilized to connect the top corners of the frame at various angles outside of the standard 90° connection. Simply slide the lock into the spines of the VAIL-120DB profiles and press down levers to lock them into place.

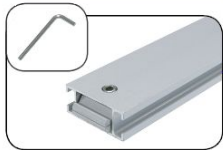
SETUP INSTRUCTIONS

REFERENCE PARTS LIST
FOR PROFILE NUMBERS

LED STRIPS



HORIZONTAL STRUT



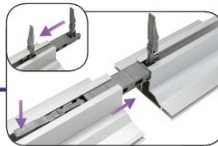
VAIL FEET



VARIABLE ANGLE LOCK



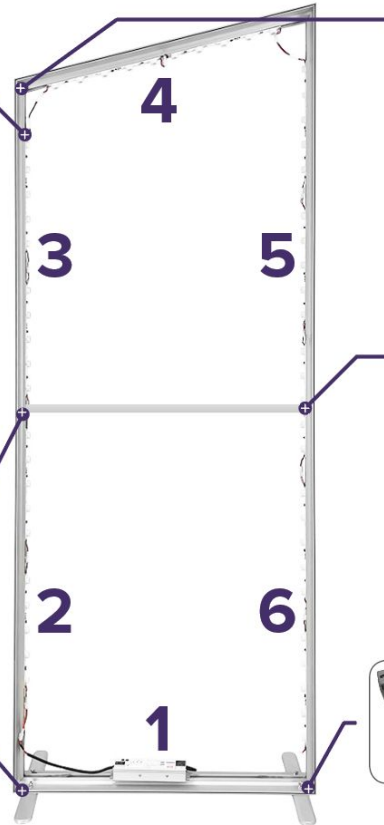
TOOL FREE SPLIT CONNECTOR



TOOL FREE CORNER



FRAME ASSEMBLY



LED & TRANSFORMER DETAILS

TRANSFORMER SPECIFICATIONS

AC-DC Single output LED driver Mix mode (CV+CC) with built-in PFC;
Output 24Vdc at 10A; IP65; Cable output; Dimming with Potentiometer

Height	38.8 mm
Length	244.2 mm
Width	68 mm
Mounting Style	Panel Mount
Input Voltage	90 VAC to 305 VAC, 127 VDC to 431 VDC
Number of Outputs	1 Output
Open Frame-Enclosed	Enclosed
Output Power	240 W
Industry	Industrial
Output Current-Channel 1	10 A
Output Voltage-Channel 1	24 VDC
Operation Mode	CV + CC
Dimming	Without Dimming
Standard	PSE
IP Rating	IP65
Control Signals	Potentiometer
Dimming Technology	Analog Potentiometer
Certifications	UL Listed

LED STRIP SPECIFICATIONS (PER STRIP)

Power	10 W per strip (2W per LED)
Input Voltage	DC24±0.5V
Color Temperature	6000-7000k
Angle	9°*50°/15°*60°
Certifications	ETL & CE Certifications
Lamp Type	CREE
Lumen	750-800LM (150-160LM *5)
Light Strip Dims	14.5"L x .75"W (L includes wires/connectors)



LED edge lights (SKU: RESORT-LS) are installed on the left and right vertical profiles of frame, along with the top angled profile. There is no lighting on the bottom profile. The edge lights install on the center spine of the VAIL-120DB profile



The transformer for the LED lights (SKU: MAM-TSFM) mounts to the bottom profile of the frame with the included adhesive back hook and loop strips. The power cord is pre wired to the transformer for plug and play application.

GRAPHIC INFO

- **Material:** Backlit Fabric (INV-FAB-BL)
- **Material Roll Width:** 117"
- **Print Process:** Dye Sublimation
- **Finishing:** Silicone Edge Graphic (SEG) finishing with 12mm x 3mm silicone beading sewn to graphic perimeter . A pull tab is sewn into a bottom corner to help with graphic removal
- **Graphic Options:**
 - Graphic Package - Double Sided Only
 - Graphic Only - Single Sided (requires qty 1 front graphic
And qty 1 back graphic to reskin frame)
- **Production Time:** See product page for current production times



Dye Sub Backlit - OC

Thickness	Printing Process	Finishing	Maximum Media Width
5.25 oz	Dye Sublimation Paper Transfer	Soft Look Bright Colors	117"

SHIPPING & WARRANTY

Shipping Locations

- **Graphic Package:** See Product Page for Current Location Offerings
- **Graphic Only:** See Product Page for Current Location Offerings
- **Hardware Only:** See Product Page for Current Location Offerings

Warranty

- 1 year warranty on graphics
- Lifetime warranty on hardware

Returns

- RMA's will be shipped back to CA or PA

Shipping Dimensions

- **Graphic Package**
 - 48"L x 10"W x 7"H
 - 42 lbs
- **Hardware Only**
 - 48"L x 10"W x 7"H
 - 40 lbs
- **Graphic Only**
 - Poly Bag
 - 1 lbs

