

RPL Counter



The RPL counter is a quick and simple solution for a portable countertop with fabric graphic displaying capabilities. Simply pop up the accordion style frame and connect the plastic locks. The front dye sub fabric graphic remains attached to the frame, so you only need to secure the end caps to the sides of the counter. The included countertop and inner shelf are made of durable MDF and feature a black woodgrain style finish. An optional dye sub fabric graphic can be added to the backside to fully enclose the display (Back graphic must be installed last once frame, front graphic, countertop, and shelf have been set up) The main front graphic with end caps is attached with 2" loop velcro, so it is very easy to change your message at different events. The counter top is hinged so it can fold and pack down into the included travel bag with carry handles.

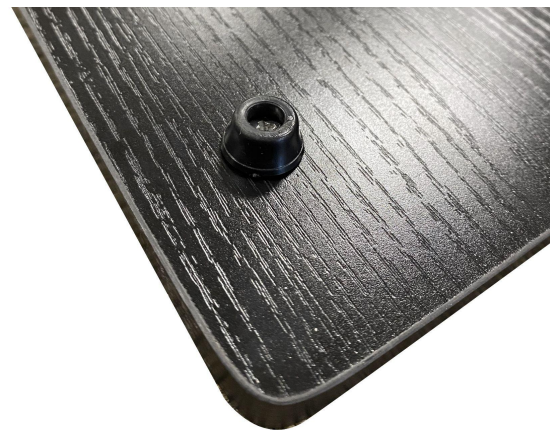
OVERVIEW

- **SKUs**
 - **RPLCNTR-G1** - RPL Counter Single Sided Graphic Package
 - **RPLCNTR-G2** - RPL Counter Double Sided Graphic Package
 - **RPLCNTR-GO1** - RPL Counter Single Sided Graphic Only
 - **RPLCNTR-GO2** - RPL Counter Double Sided Graphic Only
 - **RPLCNTR-GOB** - RPL Counter Back Graphic Only
 - **RPLCNTR-HO** - RPL Counter Hardware Only
- Counter version of RPL Fabric Pop Up Display
- Includes MDF countertop
 - Counter top folds to fit into travel bag
 - Black simulated wood grain texture
- Includes MDF inner shelf
 - Black simulated wood grain texture
- Tool free set up
- Single or double sided graphic display
- Dye sublimated fabric graphics
- Includes travel bag with carry handles

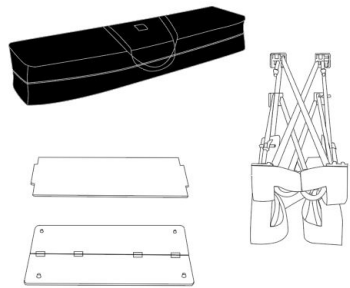


HARDWARE DETAILS

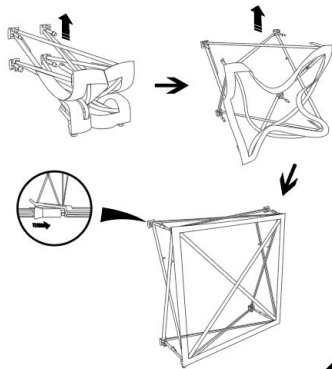
- Aluminum X rods with plastic hubs and connectors
- 2" hook velcro strip around front face of frame
- Hook velcro squares on hubs on backside for back graphic
- Countertop rests on top of frame. Small pegs on bottom of counter fit into recessed areas of top frame hubs. (see image below)
- Internal shelf rests on X rods of frame
- Frame, graphic(s), countertop, and interior shelf all fit in travel bag



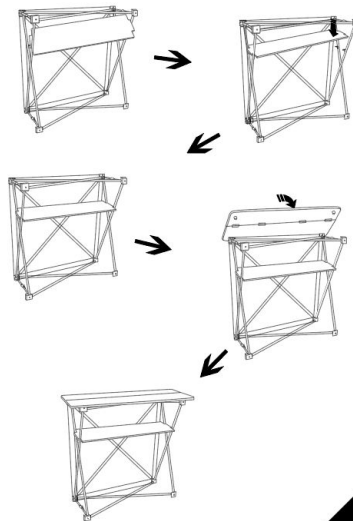
INSTRUCTIONS



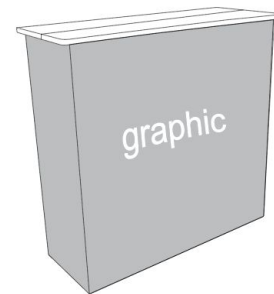
1



2



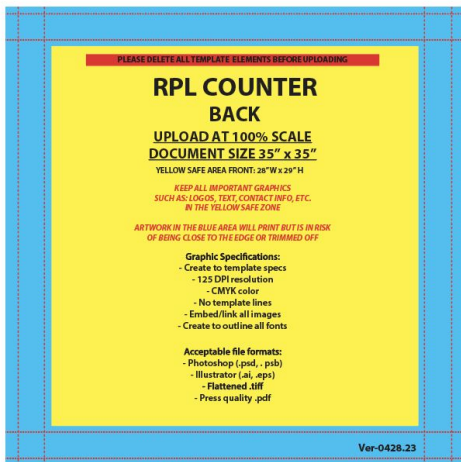
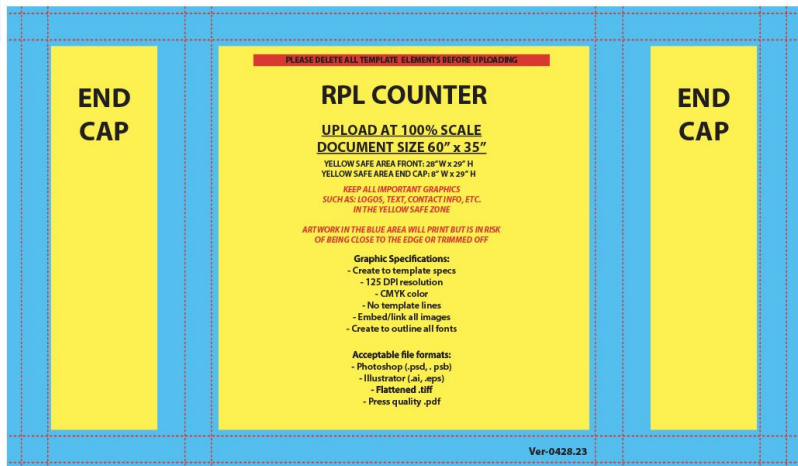
3



4

TEMPLATES

- Front template includes end caps
- End caps are attached to front graphic
- Back graphic is separate from the front graphic
- Red dotted lines indicate where sew lines are for velcro strips
 - Clear thread is used on RPLs so the sew lines won't be very noticeable from afar, but still visible



GRAPHIC INFO

- **Material:** Stretch Fabric (INV-FAB-STRETCH)
- **Print Process:** Paper Transfer Dye Sublimation
- **Finishing:** 2" loop velcro sewn around the back perimeter of front graphic.
Front graphic and end caps are attached. Back graphic has 2" loop velcro around back perimeter and is separate from front graphic. All stitching is performed with clear thread.
- **Graphic Options:**
 - Single Sided Graphics (Includes End Caps)
 - Double Sided Graphics (Front + End Caps and Back Graphic)
 - Back Graphic Only
- **Production Time:** 2 business days for up to 2 sets
- **Locations:** CA, PA, and PFC



Stretch - OC

Thickness	Printing Process	Finishing	Maximum Media Width
8.08 oz	Dye Sublimation Paper Transfer	Soft Look Bright Colors	94"

SHIPPING & WARRANTY

Shipping

- Graphic Packages ship from CA, PA, and PFC
- Graphic Onlys ship from CA, PA, and PFC
- Hardware Only ship from CA and PA
- WS Prime approved Product

Warranty

- 1 year warranty on graphics
- Lifetime warranty on hardware

Returns

- RMA's will be shipped back to CA or PA

Shipping Dimensions

- Shipping Weights
 - 19 lbs (Graphic Package)
 - 17 lbs (Hardware Only)
 - 2 lbs (Graphic Only - Front)
 - 1 lbs Graphic Only - Back)
- Shipping Dimensions
 - 36.25"L x 13.75"W x 7"H (Graphic Package)
 - 36.25"L x 13.75"W x 7"H (Hardware Only)
 - Poly Bag (Graphic Only)

