

EZ TUBE TOWER 4FT X 16FT X 4FT

EZ TUBE DISPLAYS

PRODUCT CODE: EZT-TWR-4X16



On frame On graphic



PRODUCT DESCRIPTION

The EZ Tube Tower is a commanding display solution, measuring 4ft wide x 16ft high x 4ft deep, perfect for maximizing your brand visibility. Built with durable 30mm silver anodized aluminum tubing, the tower features push-button connections for quick, tool-free assembly.

Custom dye sublimated fabric graphics are finished in a sleek pillowcase style, easily sliding over the frame and zipping securely at the bottom for a seamless, professional appearance. The tower includes a convenient travel bag for easy transport and storage.

With options for size customization and its suitability for indoor environments, the EZ Tube Tower offers versatility and impact for trade shows, events, and retail displays.

DISPLAY DIMENSIONS	48"W x 192"H x 48"D
--------------------	---------------------

GRAPHIC MATERIAL

Dye Sublimated Stretch Fabric

GRAPHIC FINISHING

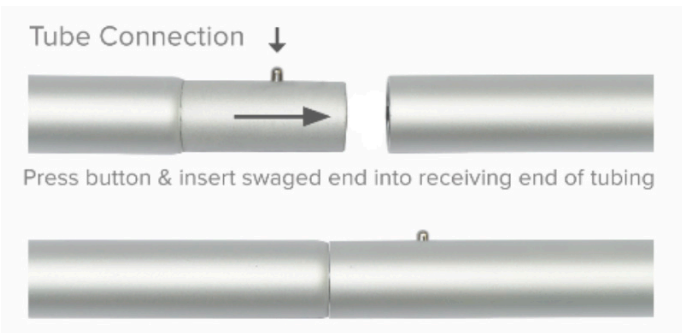
Pillowcase graphic finishing with white #10 zipper closure across the bottom of the graphic

DISPLAY CONSTRUCTION

Tower frame is constructed of 30mm anodized silver aluminum tubing with plastic corner connectors

SHIPPING WEIGHTS & DIMENSIONS

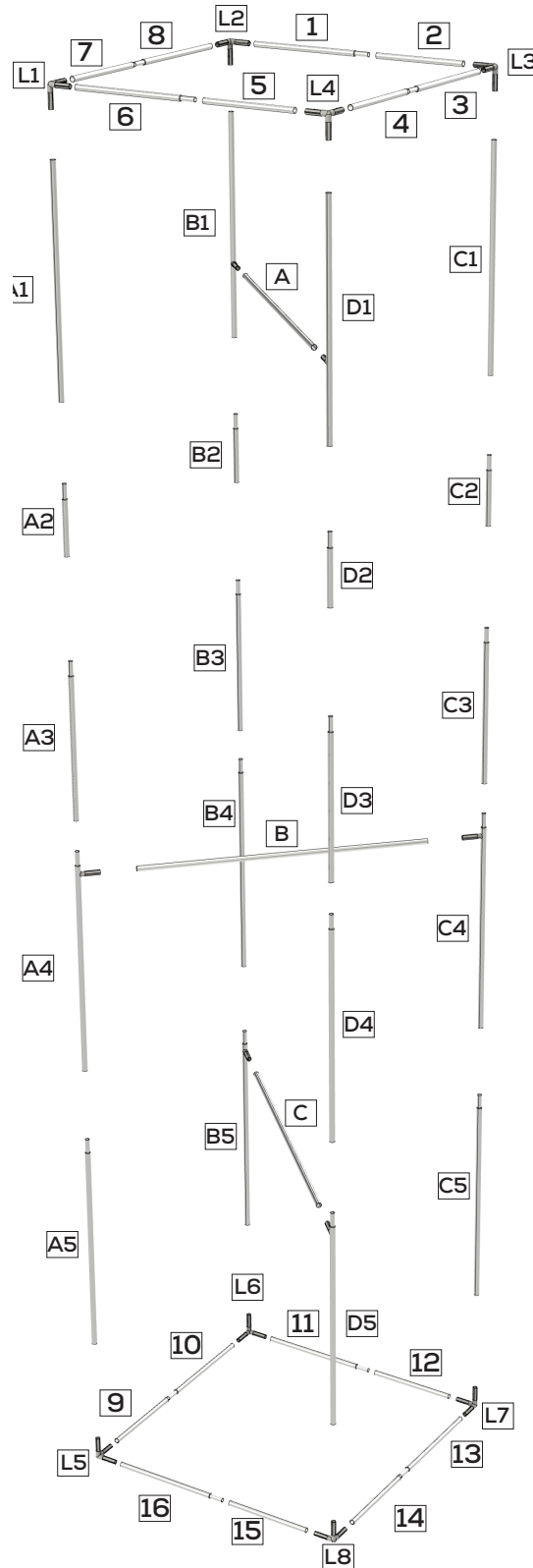
Shipping Weight	51 lbs (Graphic Package)
	36 lbs (Hardware Only)
	15 lbs (Graphic Only)
Shipping Dimensions	62"W x 14"H x 11"D (Graphic Package)
	62"W x 14"H x 11"D (Hardware Only)
	Poly Bag (Graphic Only)



INCLUDES TRAVEL BAG
SKU:WB_BAG

SET UP INSTRUCTIONS & PARTS LIST

REFERNCE LABELS ON TUBES WITH DIAGRAM BELOW FOR FRAME ASSEMBLY



EZ TUBE TOWER 4FT X 16FT X 4FT

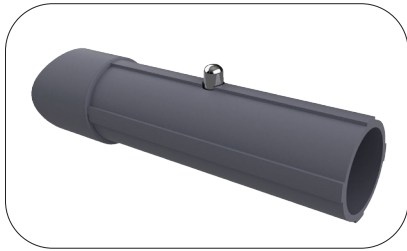
EZ TUBE DISPLAYS

PRODUCT CODE: EZT-TWR-4X16

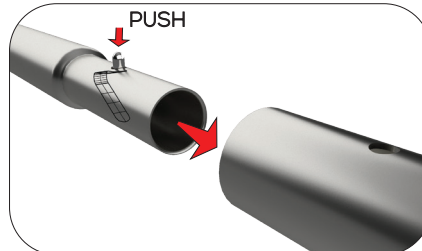


On frame On graphic

TUBE CONNECTION



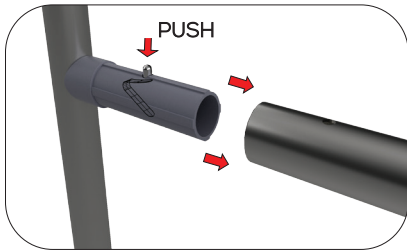
Define the location of the plastic connectors



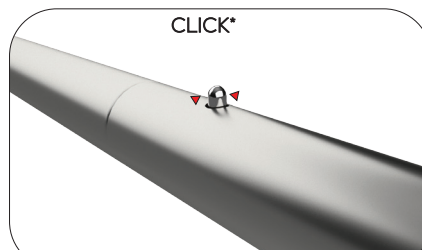
Press button & insert swaged end into receiving end of tubing



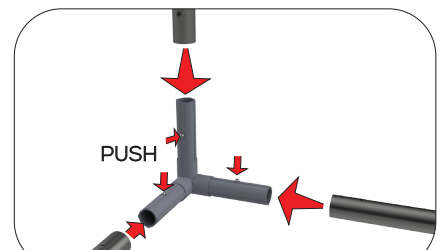
Press button & insert swaged end into receiving end of tubing



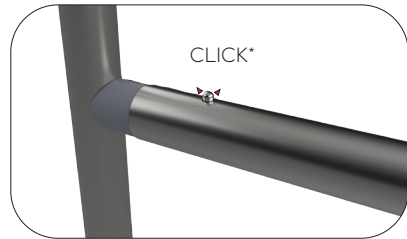
Attach the female tube in the right position and push the button, and slide the tube



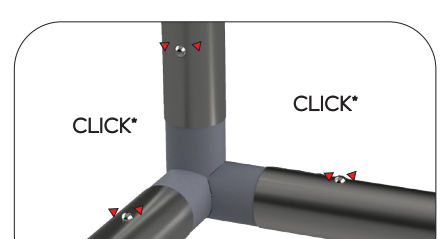
Push the female tube until the button snaps



Place the female tubes in the right position



Push the female tube until the button snaps



Push the female tube until the button snaps