

EZ TUBE ARROW

EZ TUBE FABRIC DISPLAYS
PRODUCT CODE: EZT-ARW



On Frame

OnGraphic



Hardware Only



Includes Travel Bag
SKU: SBAG24

PRODUCT DESCRIPTION

Sleek, Lightweight Floor Display with Custom Graphics
The EZ Tube Arrow offers a modern and eye-catching solution for floor display signage. Featuring a 30mm silver anodized aluminum tube frame, this display is engineered for strength and portability. The frame assembles easily with spring push-button connections, providing a tool-free setup that saves time and effort.
The display is wrapped in a custom-printed, dye sublimated stretch fabric graphic with a pillowcase-style finish, creating a smooth, professional appearance without wrinkles or sagging. The vibrant full-color graphics slip effortlessly over the frame and zip closed at the bottom for a taut, polished presentation.
Each EZ Tube Arrow includes a 24" Silverbag for convenient storage and transport, keeping your display safe and organized between events. The tube frame hardware is made to order, ensuring each piece meets your specific requirements. Custom sizing and graphic options are available to tailor the display perfectly to your brand and presentation needs.
*Recommended for indoor use only

DISPLAY DIMENSIONS	46.75"W x 28"H x 18"D
--------------------	-----------------------

GRAPHIC MATERIAL

Dye Sublimated Stretch Fabric

GRAPHIC FINISHING

Pillowcase finishing with #10 zipper closure along bottom of arrow

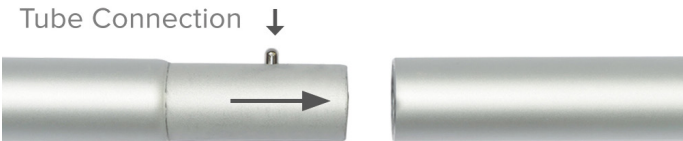
DISPLAY CONSTRUCTION

30mm Silver anodized aluminum tube frame with plastic connectors

SHIPPING WEIGHTS & DIMENSIONS

Shipping Weight	23 lbs (Hardware Only)
	20 lbs (Graphic Package)
	3 lb (Graphic Only)
Shipping Dimensions	31"L x 13"W x 6"H (Hardware Only)
	31"L x 13"W x 6"H (Graphic Package)
	Poly Bag (Graphic Only)

Tube Connection



Press button & insert swaged end into receiving end of tubing



EZ TUBE ARROW

EZ TUBE FABRIC DISPLAYS
PRODUCT CODE: EZT-ARW



On Frame

OnGraphic

ADDITIONAL IMAGES



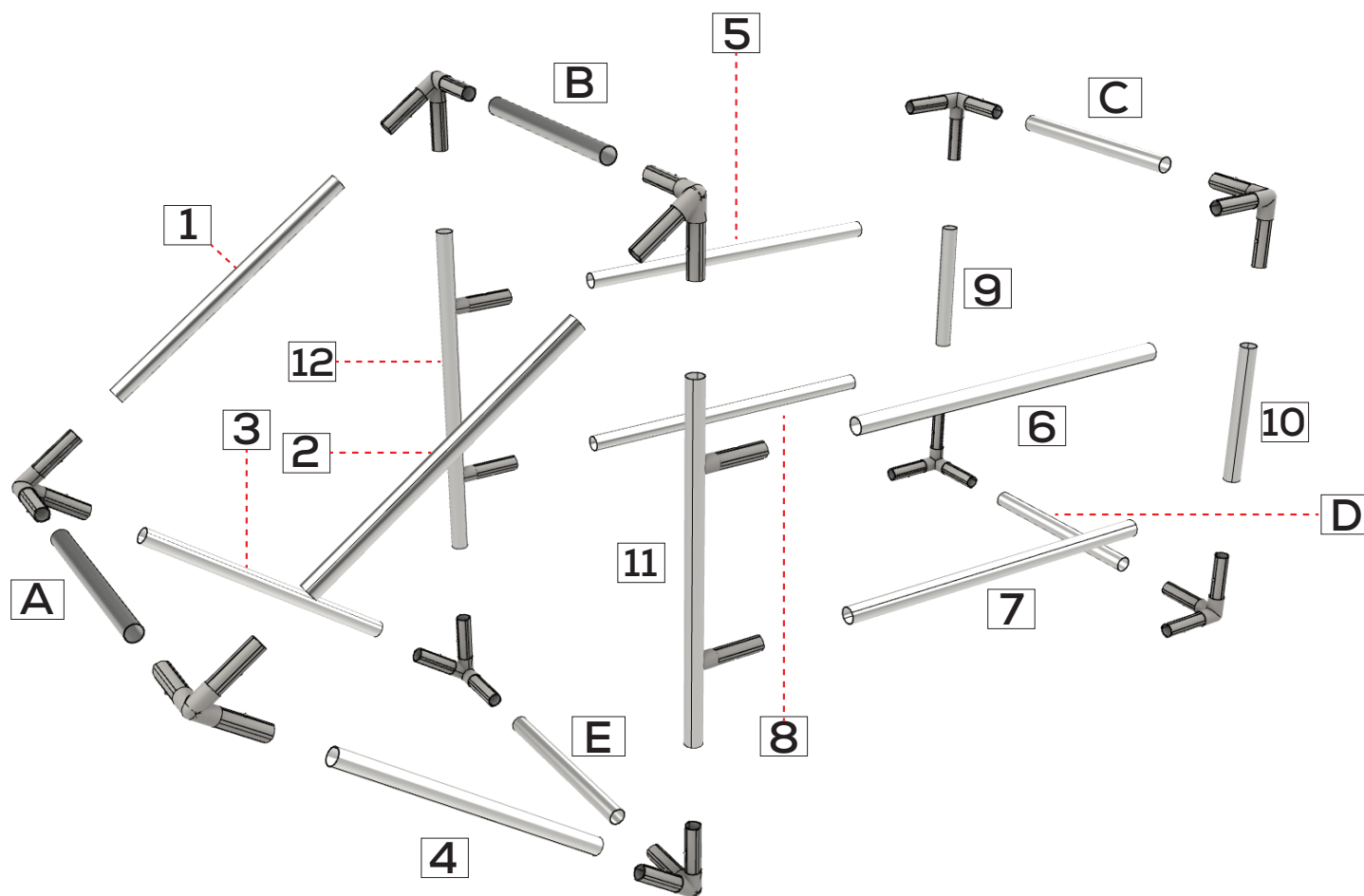
Zipper Location



DISPLAY DIMENSIONS

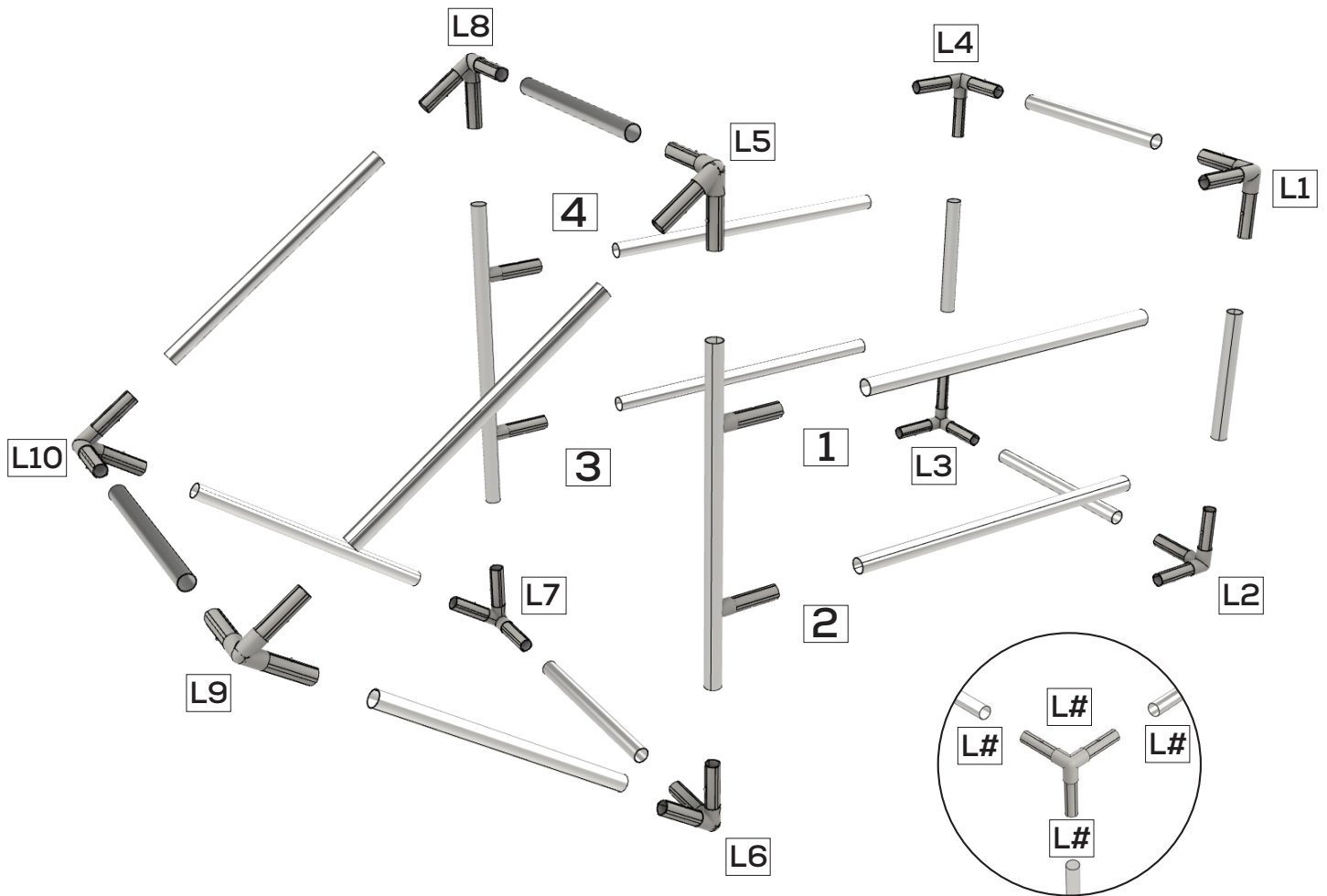


SET UP INSTRUCTIONS TUBE LOCATIONS

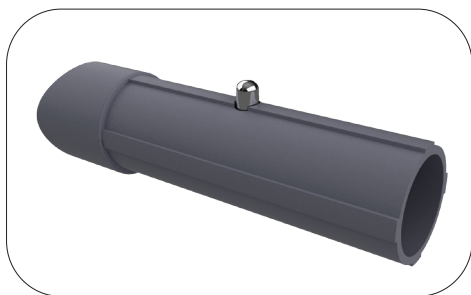


PART #	SIZE	TUBE	QTY.	PARTS
20"	20"	F/F	4	1,2,3,4
24"	24"	F/F	6	5,6,7,8,11,12
10"	10"	F/F	2	9,10
14"	14"	F/F	5	A,B,C,D,E

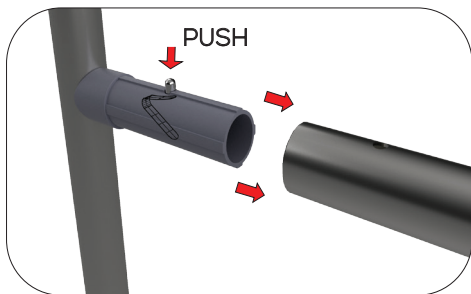
SET UP INSTRUCTIONS CORNER CONNECTORS



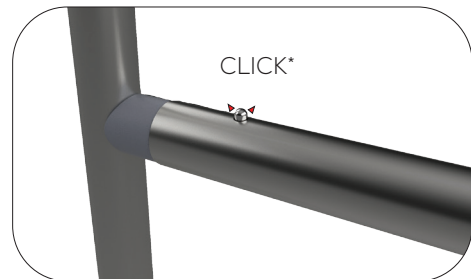
SET UP INSTRUCTIONS TUBE CONNECTION



Define the location of the plastic connectors



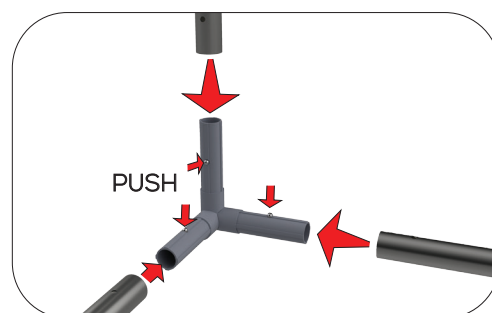
Attach the female tube in the right position and push the button, and slide the tube



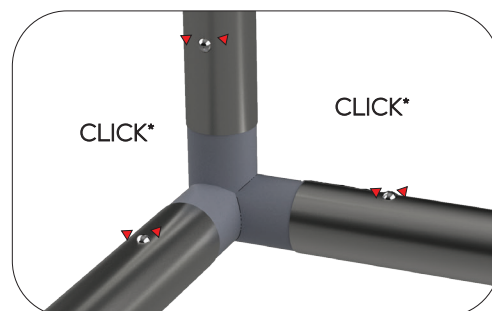
Push the female tube until the button snaps



Press button & insert swaged end into receiving end of tubing



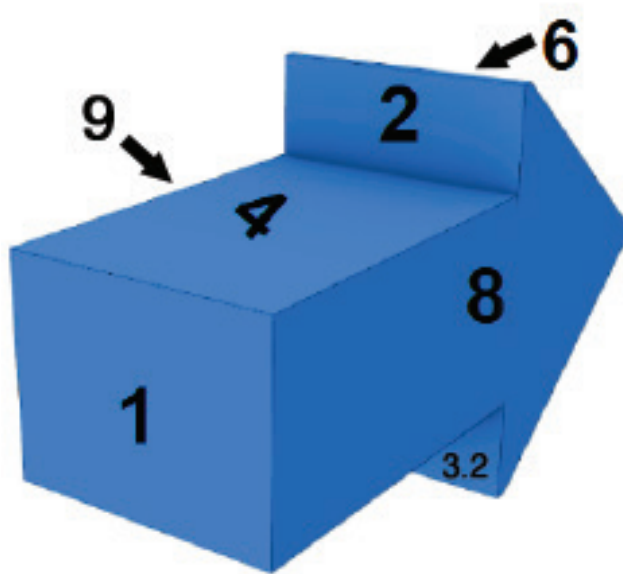
Place the female tubes in the right position



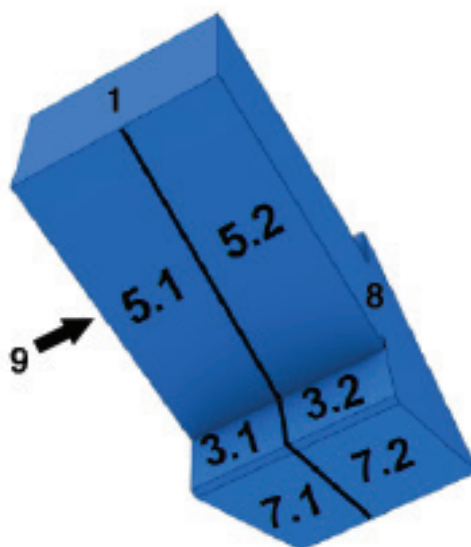
Push the female tube until the button snaps

TEMPLATE GUIDE

TOP



BOTTOM



INSTALLATION ZIPPER
SPLITS PANELS 3, 5, & 7