

# EZ TUBE® CONNECT 10FT KIT N

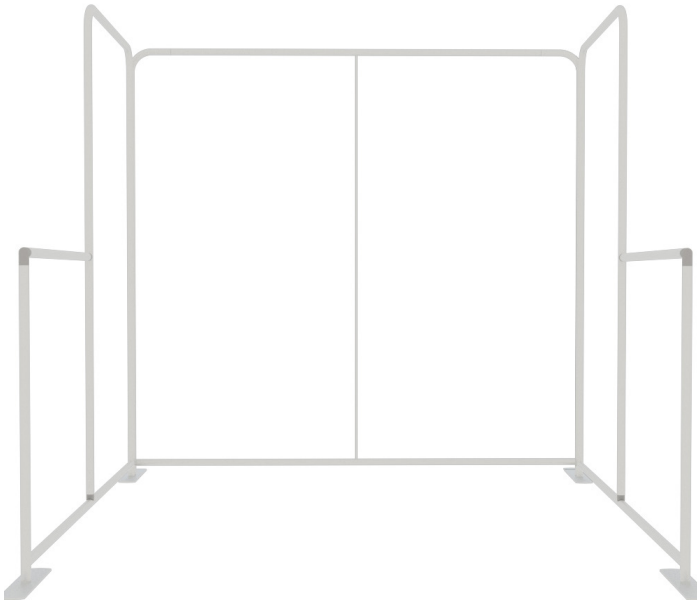
PRODUCT CATEGORY: EZ FABRIC DISPLAYS

PRODUCT CODE: EZCNCT-10KIT-N



On Frame

On Graphic



## PRODUCT DESCRIPTION

The EZ Tube® Connect 10ft Configuration N is a versatile display solution that combines a 10ft EZ Tube® Connect Backwall with two EZ Tube® Connect Return Walls to create an immersive, semi-enclosed booth environment. Its L-shaped sidewalls provide added depth, branding opportunities, and an inviting space for customer engagement at trade shows, events, or retail locations.

### Key Features

- Complete Kit Design – Includes one 10ft EZ Tube® Connect Backwall and two return walls for a cohesive three-panel display layout.
- Custom Graphics – Available with single-sided or double-sided dye-sublimated stretch fabric graphics. Single-sided versions feature a blank white back fabric.
- Tool-Free Assembly – Lightweight, snap-together aluminum tube frame with push-button connections makes setup quick and simple.
- Premium Print Quality – High-resolution dye-sublimation printing produces vibrant, fade-resistant graphics that stand out in any environment.
- Professional Finish – Pillowcase-style graphic with hidden zipper closure ensures a smooth, wrinkle-free appearance.
- Portable & Travel-Ready – All components fit neatly into a soft carry bag for easy transportation and storage.

### Ideal For:

- Trade shows and expos
- Branded event backdrops
- Retail environments
- Product launches and promotional displays

With its combination of high-impact visuals, quick assembly, and reconfigurable design, the EZ Tube® Connect 10ft Configuration N delivers both functionality and style—making it a top choice for brands that want to stand out.

DISPLAY DIMENSIONS	120"W x 90"H x 99.125"D
--------------------	-------------------------

## GRAPHIC MATERIAL

Dye Sublimated Stretch Fabric

## GRAPHIC FINISHING

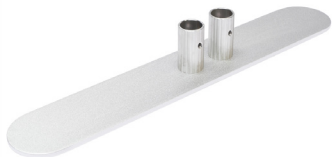
Sewn on left, right and top with zipper on the bottom

## DISPLAY CONSTRUCTION

34mm Aluminum Tubing

## SHIPPING WEIGHTS & DIMENSIONS

Shipping Weight Return Wall Each (2 Boxes Total)	36 lbs (Graphic Package) 30 lbs (Hardware Only) 6 lbs (Graphic Only)
Shipping Dimensions Return Wall Each (2 Boxes Total)	46"W x 8"H x 8"D (Graphic Package) 46"W x 8"H x 8"D (Hardware Only) Polybag (Graphic Only)
Shipping Weight EZ Connect 10ft	22 lbs (Graphic Package) 14 lbs (Hardware Only) 8 lbs (Graphic Only)
Shipping Dimensions EZ Connect 10ft	41"W x 12"H x 4"D (Graphic Package) 41"W x 12"H x 4"D (Hardware Only) Polybag (Graphic Only)



Dual Foot Connection



Connecting Clip

# EZ TUBE® CONNECT 10FT KIT N

PRODUCT CATEGORY: EZ FABRIC DISPLAYS

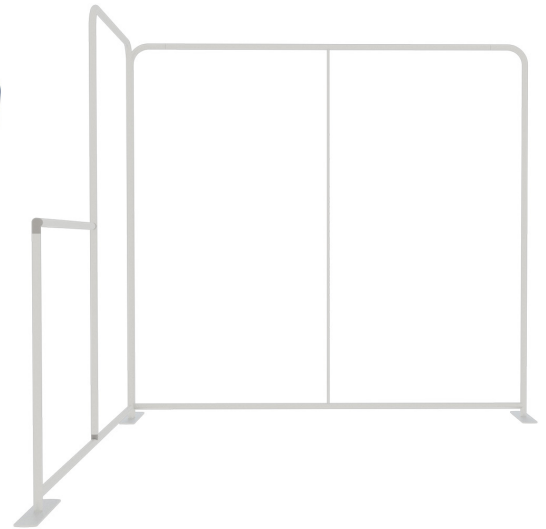
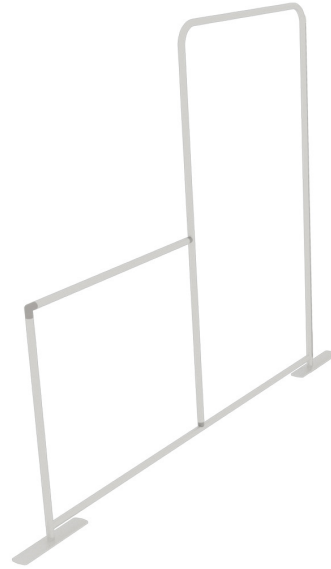
PRODUCT CODE: EZCNCT-10KIT-N



On Frame

On Graphic

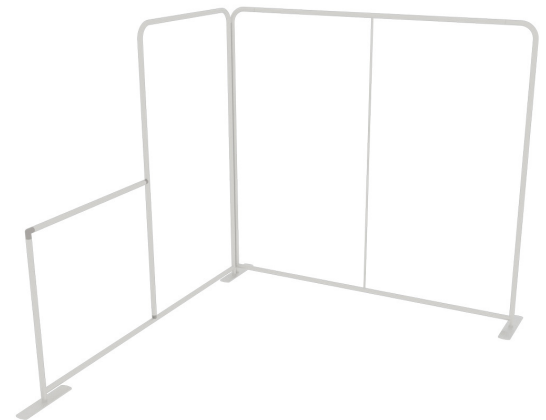
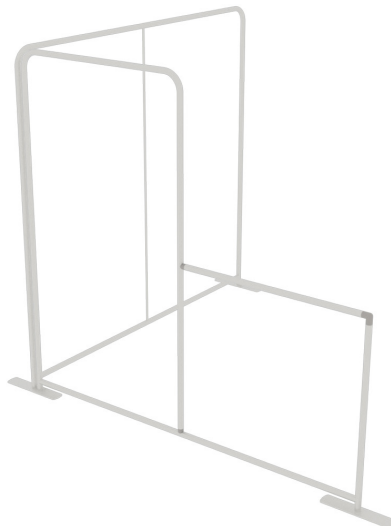
## RETURN WALL - LEFT IMAGES



SINGLE SIDED  
WHITE BACK FABRIC



DOUBLE SIDED



# EZ TUBE® CONNECT 10FT KIT N

PRODUCT CATEGORY: EZ FABRIC DISPLAYS

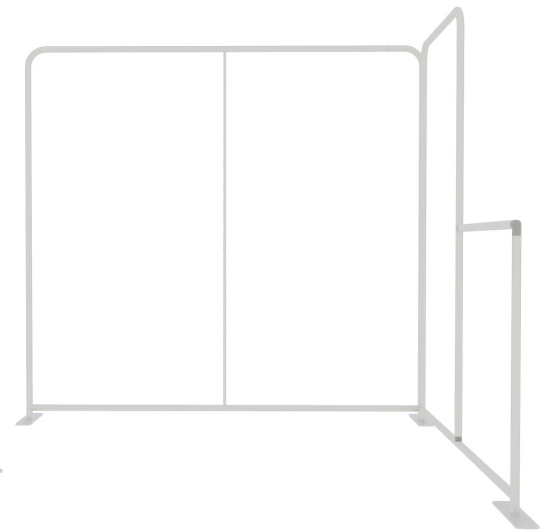
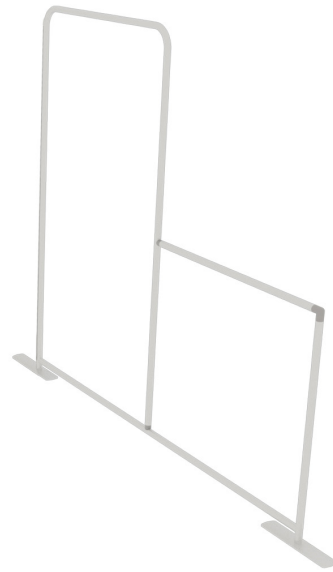
PRODUCT CODE: EZCNCT-10KIT-N



On Frame

On Graphic

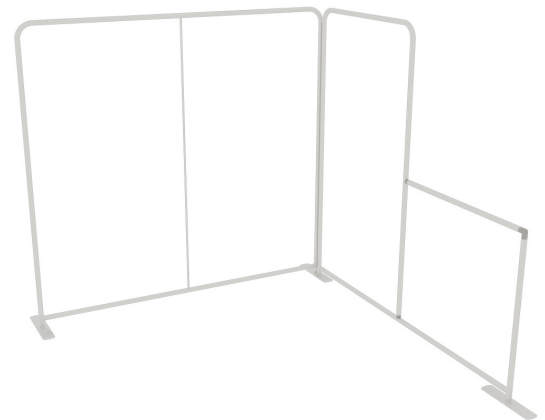
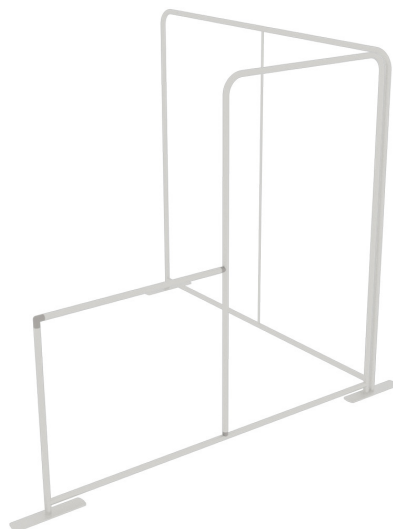
## RETURN WALL - RIGHT IMAGES



SINGLE SIDED  
WHITE BACK FABRIC



DOUBLE SIDED



# EZ TUBE® CONNECT 10FT KIT N

PRODUCT CATEGORY: EZ FABRIC DISPLAYS

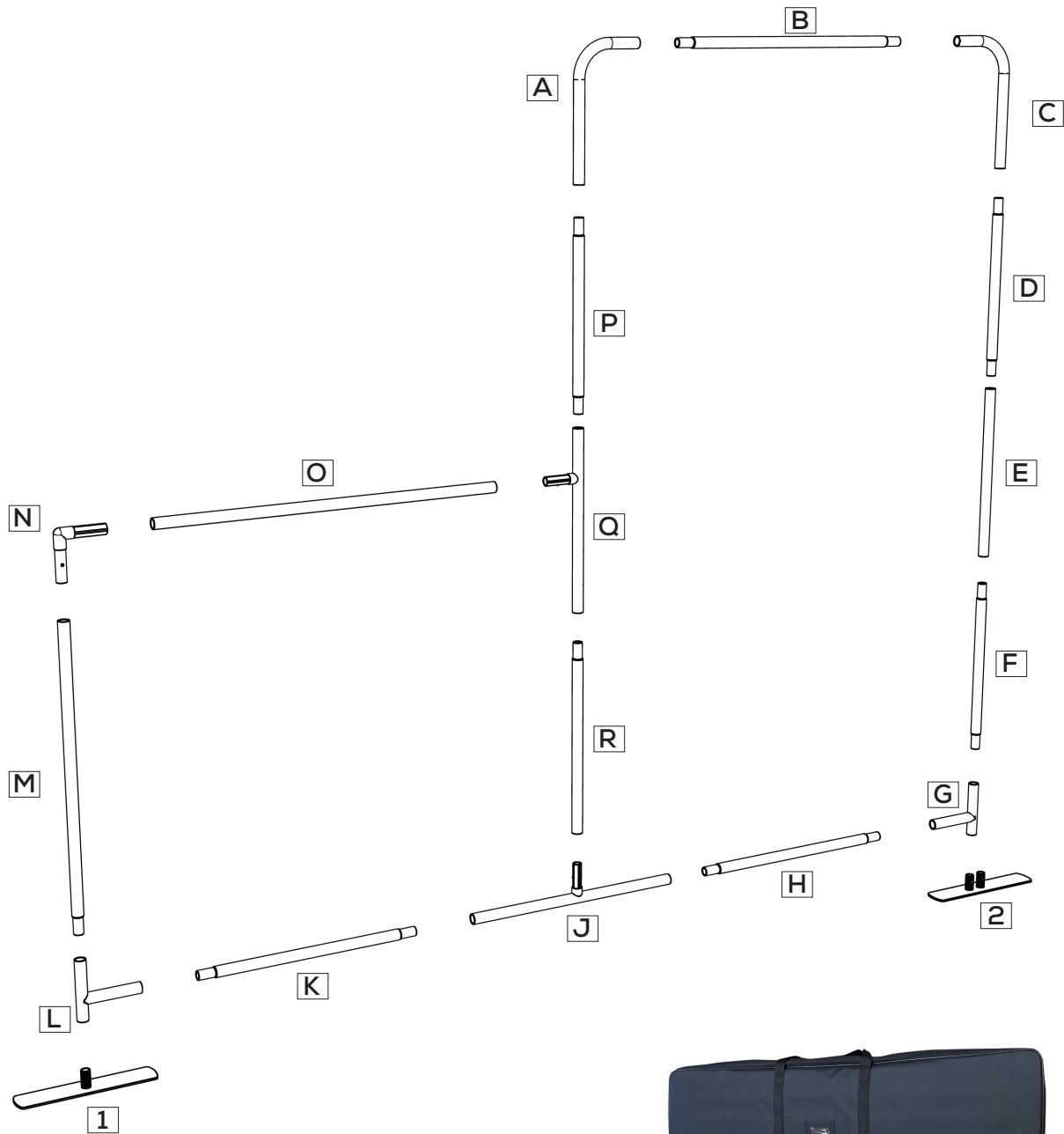
PRODUCT CODE: EZCNCT-10KIT-N



On Frame

On Graphic

## PARTS LIST/INSTRUCTIONS RETURN WALLS



Includes Travel Bags  
SKU: EZT-BAG  
BAG DIMS: 44.8" L x 14" W x 4.7" H

# EZ TUBE® CONNECT 10FT KIT N

PRODUCT CATEGORY: EZ FABRIC DISPLAYS

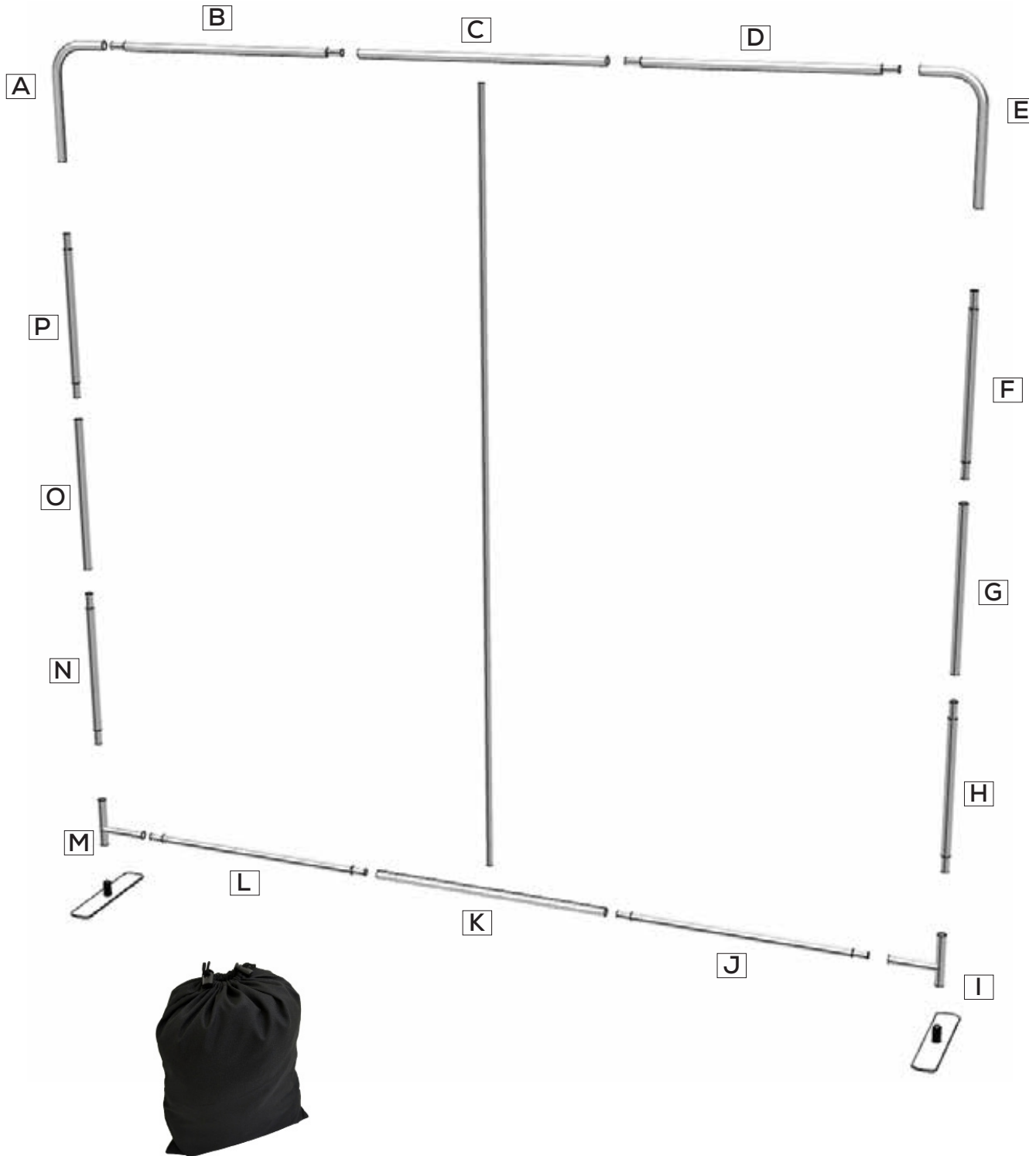
PRODUCT CODE: EZCNCT-10KIT-N



On Frame

On Graphic

## PARTS LIST/INSTRUCTIONS 10FT BACKWALL



Includes Travel Bag  
SKU: EZCNCT-SBAG10FT  
BAG DIMS: 39.4" L x 23.6" W

# EZ TUBE® CONNECT 10FT KIT N

PRODUCT CATEGORY: EZ FABRIC DISPLAYS

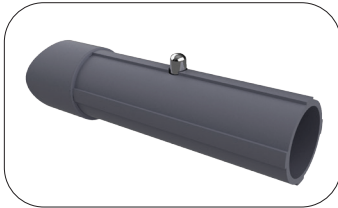
PRODUCT CODE: EZCNCT-10KIT-N



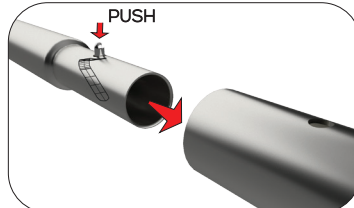
On Frame

On Graphic

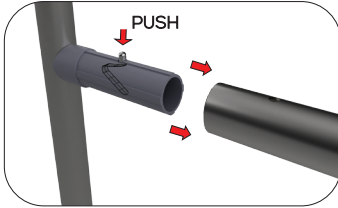
## TUBE CONNECTION



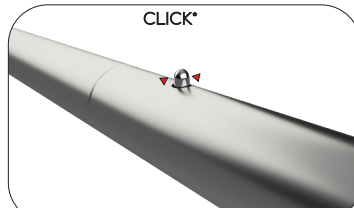
Define the location of the plastic connectors



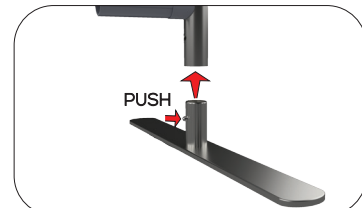
PUSH  
Press button & insert swaged end into receiving end of tubing



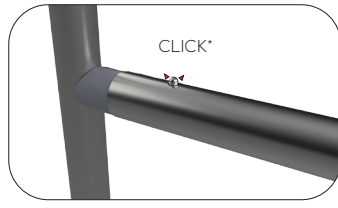
PUSH  
Attach the female tube in the right position and push the button, and slide the tube



CLICK\*  
Push the female tube until the button snaps



PUSH  
Press button & insert feet into receiving end of tubing



CLICK\*  
Push the female tube until the button snaps

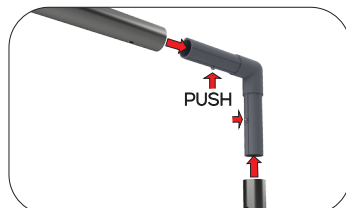


CLICK\*  
Push the female tube until the button snaps

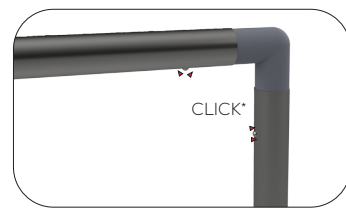
## CORNER CONNECTION



Define the location of the plastic connectors

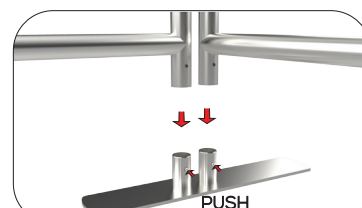
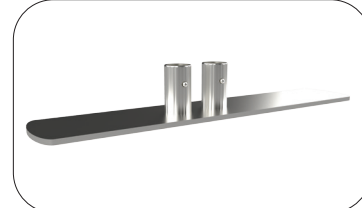


PUSH  
Attach the female tube in the right position and push the button while sliding the tubes



CLICK\*  
Push the female tubes until the button snaps

## FOOT CONNECTION



PUSH  
Press button & insert feet into receiving end of tubing



CLICK\*  
Push the female tube until the button snaps