

EZ TUBE® CONNECT 10FT KIT N

PRODUCT CATEGORY: EZ FABRIC DISPLAYS

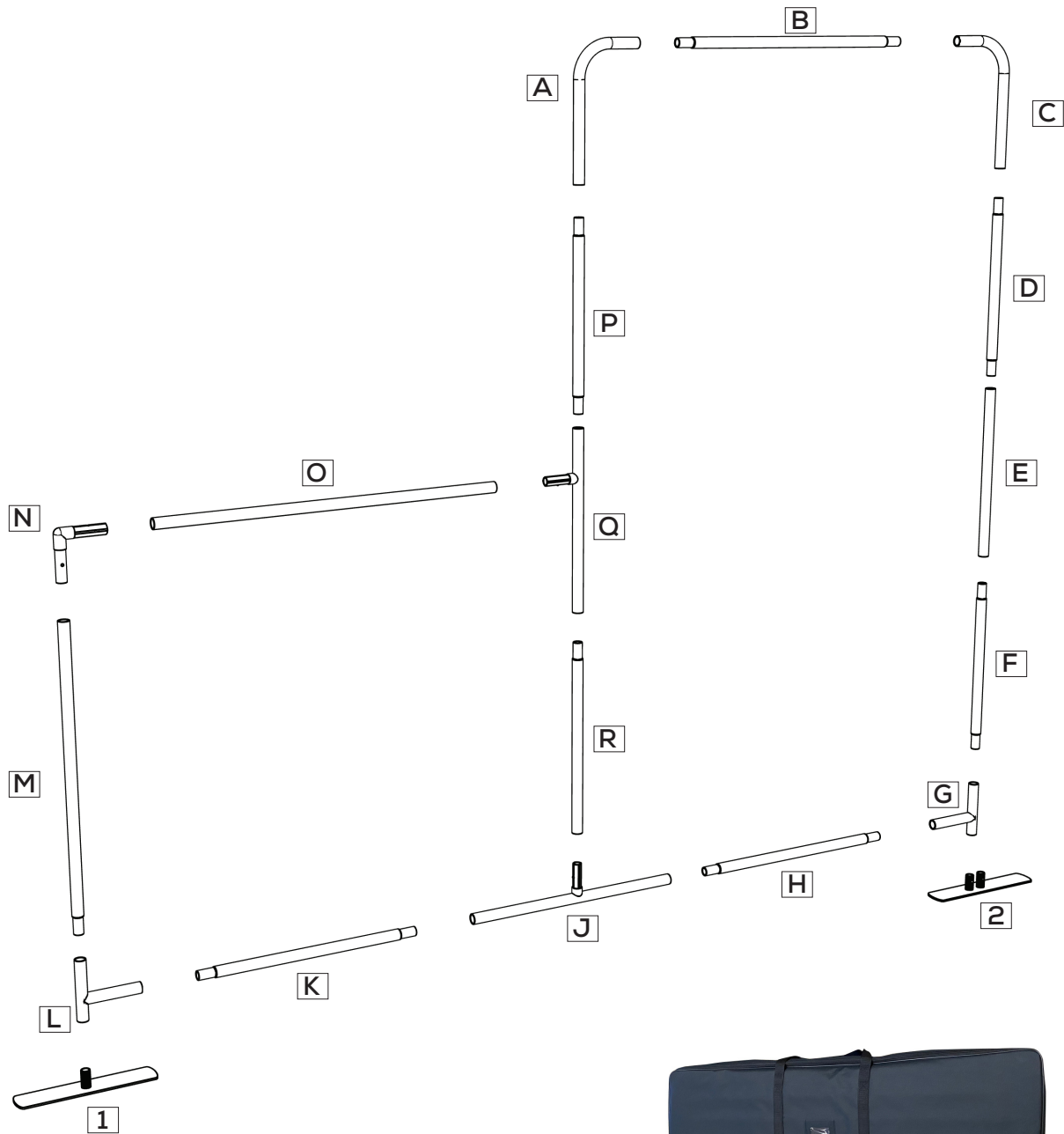
PRODUCT CODE: EZCNCT-10KIT-N



On Frame

On Graphic

PARTS LIST/INSTRUCTIONS RETURN WALLS



Includes Travel Bags
SKU: EZT-BAG
BAG DIMS: 44.8" L x 14" W x 4.7" H

EZ TUBE® CONNECT 10FT KIT N

PRODUCT CATEGORY: EZ FABRIC DISPLAYS

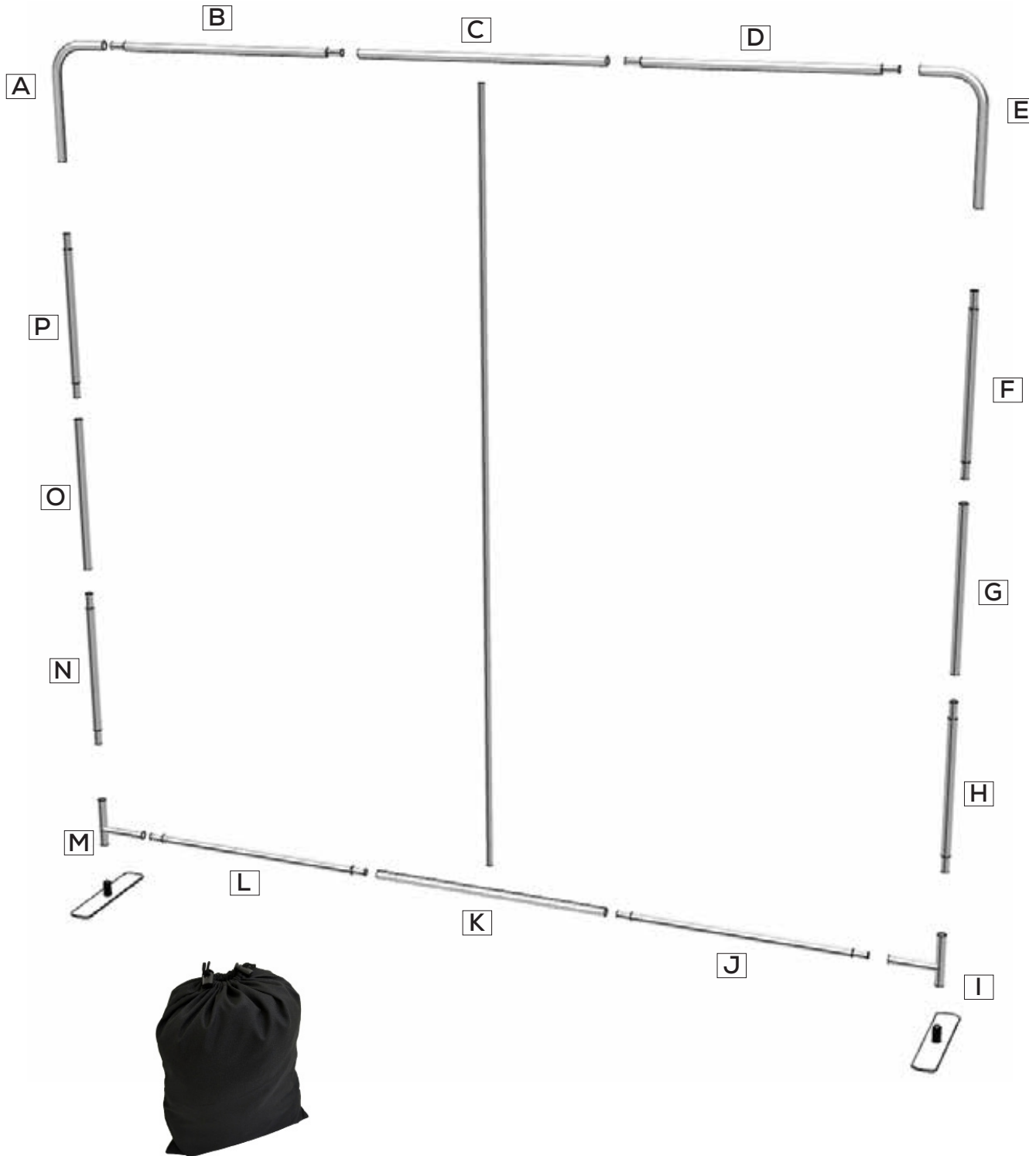
PRODUCT CODE: EZCNCT-10KIT-N



On Frame

On Graphic

PARTS LIST/INSTRUCTIONS 10FT BACKWALL



Includes Travel Bag
SKU: EZCNCT-SBAG10FT
BAG DIMS: 39.4" L x 23.6" W

EZ TUBE® CONNECT 10FT KIT N

PRODUCT CATEGORY: EZ FABRIC DISPLAYS

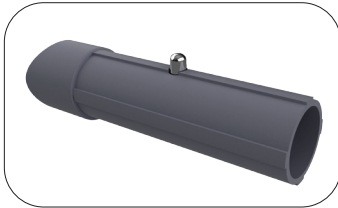
PRODUCT CODE: EZCNCT-10KIT-N



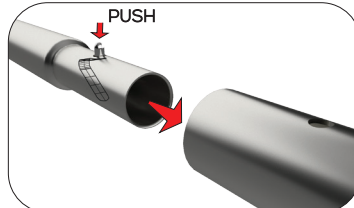
On Frame

On Graphic

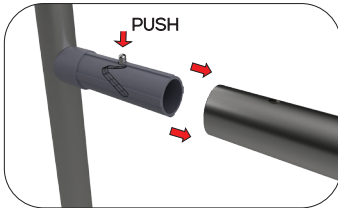
TUBE CONNECTION



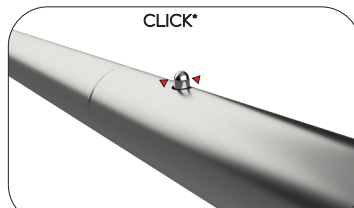
Define the location of the plastic connectors



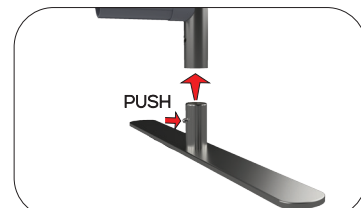
PUSH
Press button & insert swaged end into receiving end of tubing



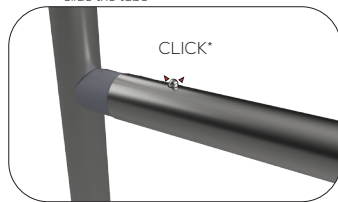
PUSH
Attach the female tube in the right position and push the button, and slide the tube



CLICK*
Push the female tube until the button snaps



PUSH
Press button & insert feet into receiving end of tubing



CLICK*
Push the female tube until the button snaps

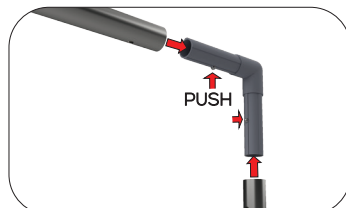


CLICK*
Push the female tube until the button snaps

CORNER CONNECTION



Define the location of the plastic connectors

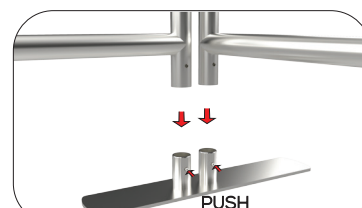
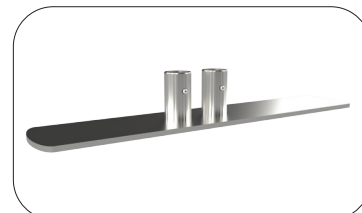


PUSH
Attach the female tube in the right position and push the button while sliding the tubes



CLICK*
Push the female tubes until the button snaps

FOOT CONNECTION



PUSH
Press button & insert feet into receiving end of tubing



CLICK*
Push the female tube until the button snaps