

ROLL UP BANNERS

ONE CHOICE - 33.5 IN. GOOD ROLL UP
BANNER STAND

PRODUCT CODE: OC-ER33.5SLV



Front View



Angle View

PRODUCT DESCRIPTION

The Good Roll Up delivers a professional looking display at an economical price. Set up and break down of the display takes seconds and conveniently stores in its included padded travel bag. Banner attached to the bottom of stand by double-sided tape and to the top by clamp bar.

FEATURES

DISPLAY DIMENSIONS

- 33 1/2" W x 80" H x 15" D

GRAPHIC DIMENSIONS

- 33 1/2" W x 80" H

GRAPHIC MATERIAL

- UV Printed Super Flat Vinyl

GRAPHIC FINISHING

- Cut to size with 5" leader panel bleed

DISPLAY CONSTRUCTION

- Sturdy Aluminum Construction

WEIGHTS & DIMENSIONS (WITH STAND & GRAPHICS)

SHIPPING WEIGHTS

- (Qty 1): 9 lbs
- (Qty 6): 48 lbs
- (Qty 28): 1,389 lbs

PACKAGE DIMENSIONS

- (Single Box):
5" L x 5" W x 36" H
- (Master Box):
9.5" L x 13.5" W x 37" H
- (Freight):
48" L x 40" W x 77" H skid

TURNAROUND TIME

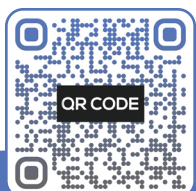
GRAPHIC PACKAGE

- 2 business days after proof approval*

AVAILABILITY

- WEST COAST
FULFILLMENT CENTER

*After proof approval, for **up to 20 sets**. Reply with approval via e-mail by 4:00pm PT the day prior to the assigned ship date.



Scan QR Code To View More Resources.



ROLL UP BANNERS

ONE CHOICE - 33.5 IN. GOOD ROLL UP
BANNER STAND
PRODUCT CODE: OC-ER33.5SLV

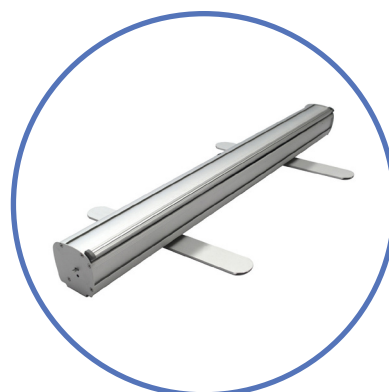


PARTS LIST



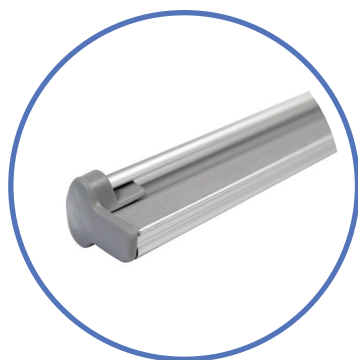
QTY 1:
Travel Bag

Outside Dimensions:
• 35" L x 4" W x 4" H
Inside Dimensions:
• 35" L x 3 1/2" W x 3 3/4" H



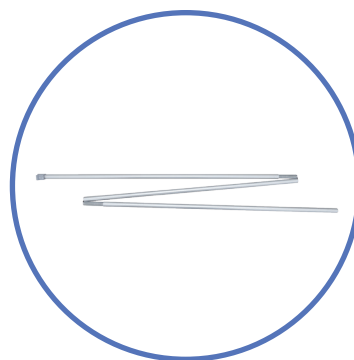
QTY 1:
Good Roll Up Stand

Feet NOT Expanded:
• 34" L x 3 1/2" W x 3 1/2" H
Feet Expanded:
• 34" L x 15" W x 3 1/2" H



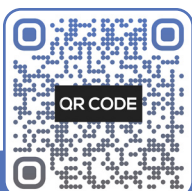
QTY 1:
Clamp Bar

• 33 3/4" L x 1 1/2" W x 1" H



QTY 1:
Support Pole

• 81 3/4" H (When assembled)



Scan QR Code To View More Resources.