

ALPINE BOOTH B

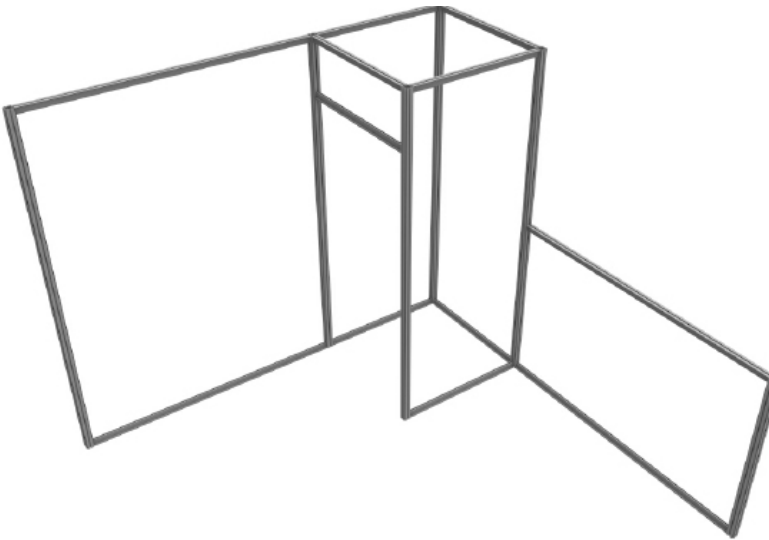
RESORT EXTRUSIONS
PRODUCT CODE:ABBG



On frame



On graphic



PRODUCT DESCRIPTION

Be in charge of your environment and give your space all that it needs with Alpine custom exhibit booths. Many design configurations allow you the freedom to add backwalls, rooms, doors, shelves, slatwalls, and frontlit and backlit LED lighting. Whatever your product or service, Alpine booths lie at the intersection of creativity and Feng Shui. Bring exhibitors your way with Alpine—It's hard to ignore something original. Contact us for pricing and configurations.

DISPLAY DIMENSIONS	112.6" W x 94.5" H x 112.6" D
GRAPHIC SIZES	(qty 2) 71" W x 94.5" H (Tallest/Largest Right-Side Graphic, Front & Backside)
	(qty 3) 35.5" W x 94.5" H (Wall Panels Graphic Prints)
	(qty 1) 35.5" W x 12" H (Door Header Graphic)
	(qty 2) 71" W x 47.25" H (Shortest Left-Side Horizontal Graphic, Front & Backside)
	(qty 2) 35" W x 80.25" H (Door Graphic)

GRAPHIC MATERIAL

Satin Fabric

GRAPHIC FINISHING

Silicone edge beading sewn into perimeter of graphic.

DISPLAY CONSTRUCTION

Aluminum frame and components

SHIPPING WEIGHTS & DIMENSIONS

Shipping Weight	(x) lbs (stand only)
	(x) lbs (frame and graphic)
Shipping Dimensions	67"L x 18"W x 11.5"H

LARGE QUANTITY FREIGHT

Freight Shipping	(x) boxes per 48"L x 40"W x (x)"H skid
Freight Weight	(x) lbs (frame only)
	(x) lbs (frame & graphic)

GRAPHIC TURN AROUND TIME

6 business days after proof approval

AVAILABLE ACCESSORIES

Monitor Mount

AVAILABILITY	CA
--------------	----

Includes qty 2 La Caja Travel Cases



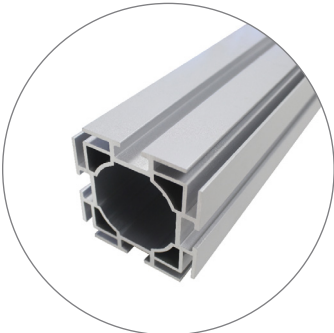
On frame



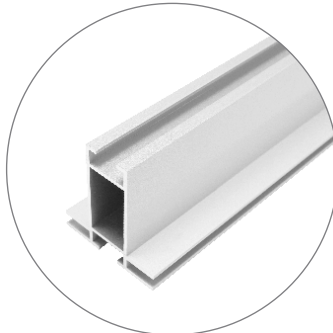
On graphic



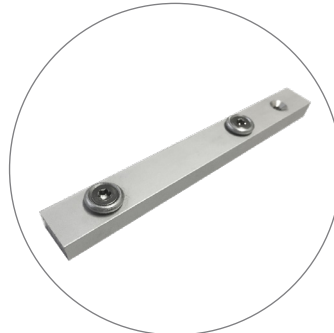
PARTS LIST



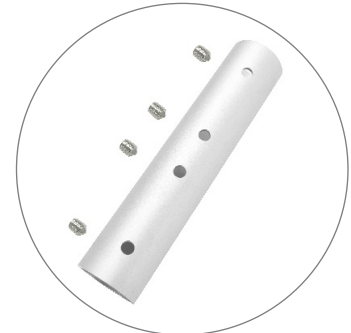
(qty 11) 47.25" Vertical Extrusions



(qty 16) 35.5" Horizontal Extrusions with locks



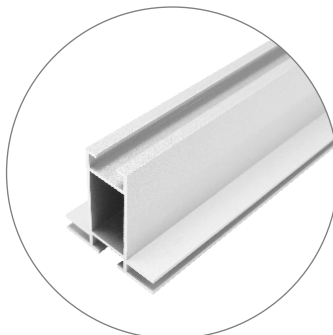
(qty 4) Support Connector



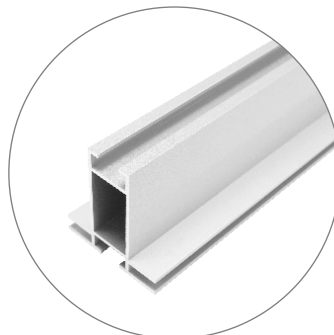
(qty 5) Booth Connector



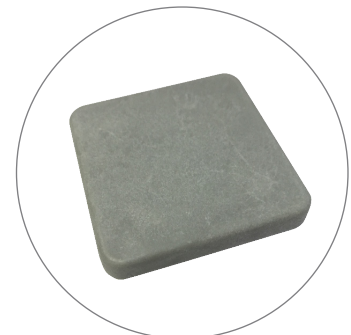
(qty 2) Door Hinges



(qty 4) Door Corner Female



(qty 4) Door Corner Male



(qty 2) Extrusion Caps



(qty 1) Caster



(qty 1) Door Lock and Handle

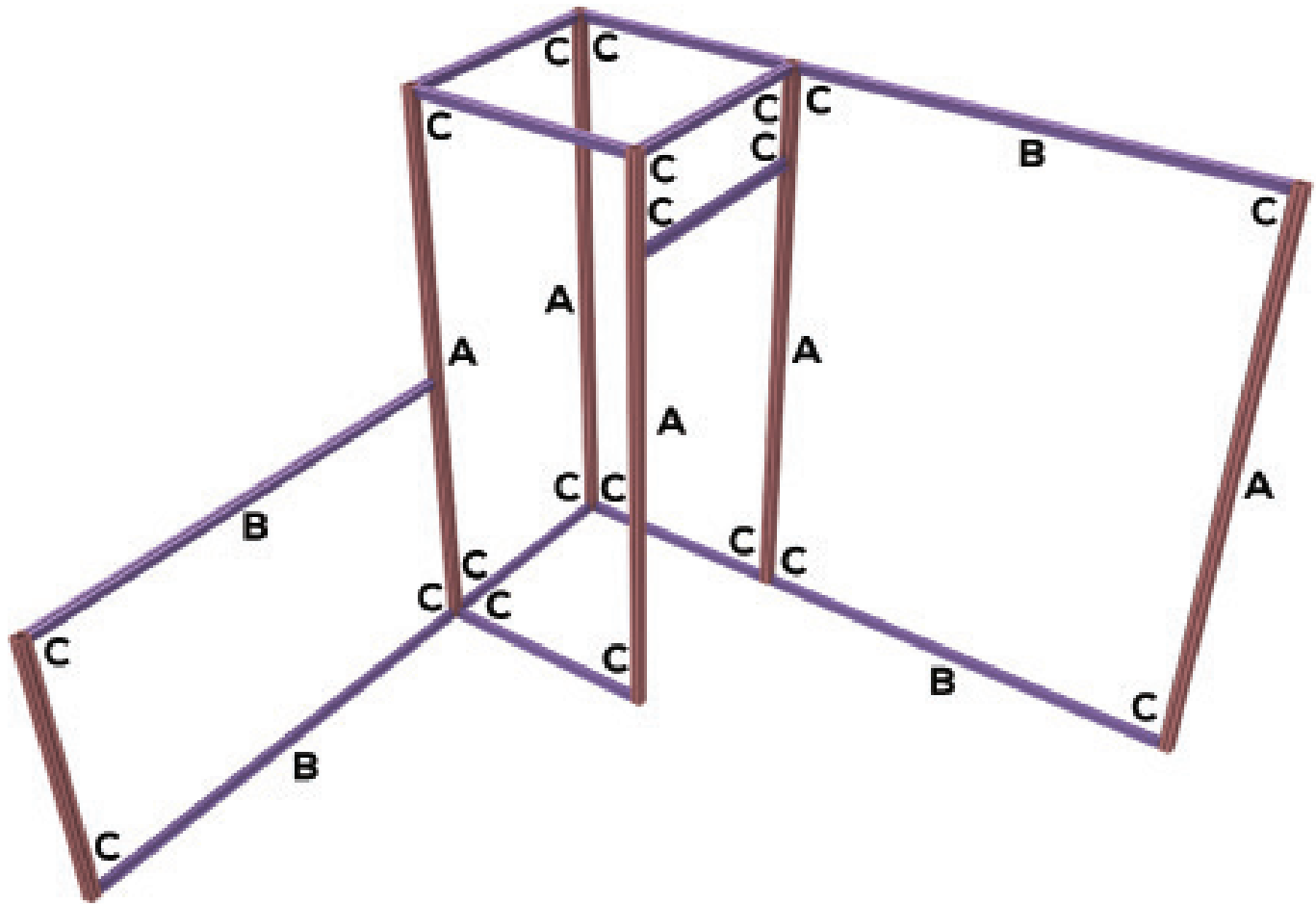


(qty 1) 4mm Allen Key



(qty 2) La Caja Cases

SET UP INSTRUCTIONS



VERTICAL EXTRUSION ASSEMBLY



A Insert connecting tube into extrusion and tighten the 2 locking screws. Slide other end of extrusion onto connector and tighten the 2 locking screws to secure.

HORIZONTAL EXTRUSION ASSEMBLY



B Insert connector into extrusion and tighten the 2 locking screws. Slide other end of extrusion onto connector and tighten the 2 locking screws to secure.

CORNER CONNECTION



C Line up lock on horizontal extrusion with one of the grooves on the vertical extrusion. Tighten screw to connect both pieces. Can attach extrusions and accessories to all 4 sides of the vertical extrusion.

The ends of each piece is numbered 1,2, 3, etc. Match up the numbers to construct frame (1:1, 2:2, 3:3, etc). Reference diagram above on where to start frame assembly.



On frame



On graphic



REQUIRED TOOLS



(qty 1) 4mm Allen Key
(included)