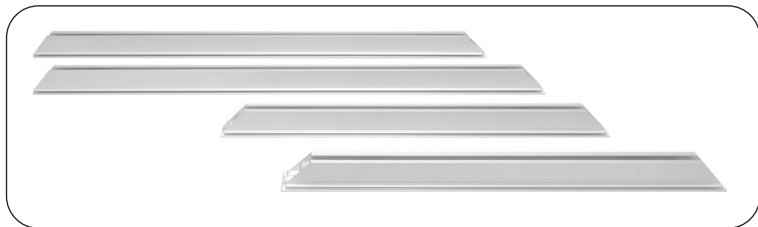


4.75in FLOOR SEG

Part Identification



Lay out all of your pieces. The ends of the profiles with angle cuts are where the corner connectors are used.

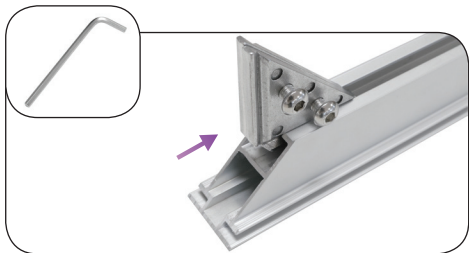


The bottom profile(s) for freestanding displays have holes drilled for foot installation



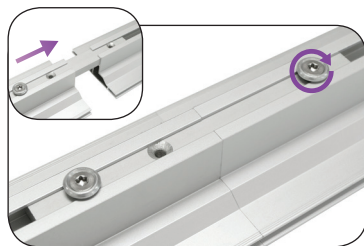
The ends of the profiles with straight cuts are where split connectors are inserted (not all frames require split connectors)

Corner Connector Assembly



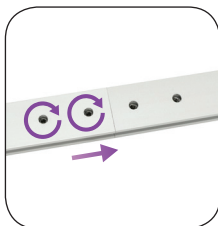
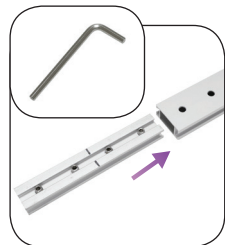
- Slide triangle corner lock into bottom extrusion channel
- Slide vertical profile onto the triangle connector
- Tighten screws with included 5mm allen wrench to secure connection

Split Connector Assembly



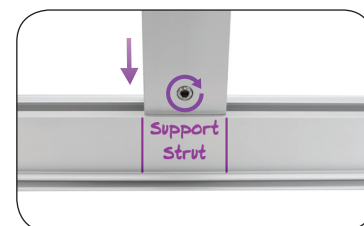
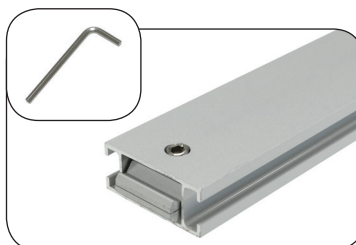
- Remove the screw and insert split connector into one end of the extrusion
- Tightens screw to lock it into place
- Remove the remaining screw from the connector
- Slide other extrusion onto exposed split connector
- Make sure extrusions are flush and tighten screw to secure connection

Support Strut* Assembly



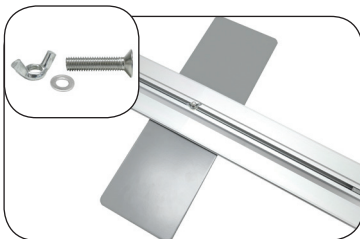
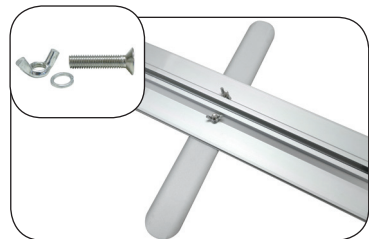
- Remove the screw and insert split connector into one end of the extrusion
- Tightens screw to lock it into place
- Remove the remaining screw from the connector
- Slide other extrusion onto exposed split connector
- Make sure extrusions are flush and tighten screw to secure connection

Support Strut* Installation



- End locks are pre-installed into the ends of the support strut
- Align support strut with split in the horizontal profiles
- Insert end lock into channel of profile
- Use star tool to tighten locks and make a secure connection

Foot Installation



- Remove wingnuts from bolts
- Align holes in feet with holes on bottom extrusion
- Slide bolt through feet and extrusion holes and thread wingnuts onto them

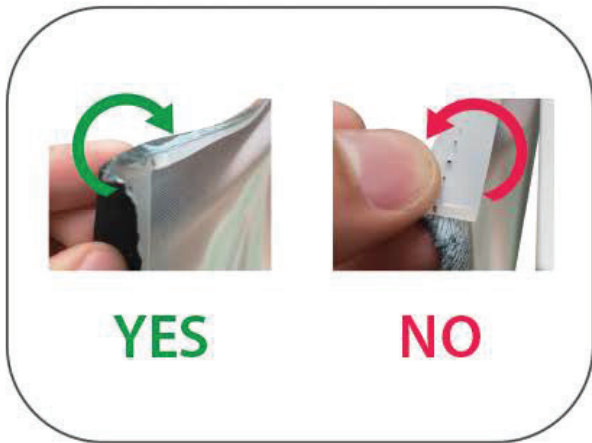
SEG GRAPHIC INSTALLATION



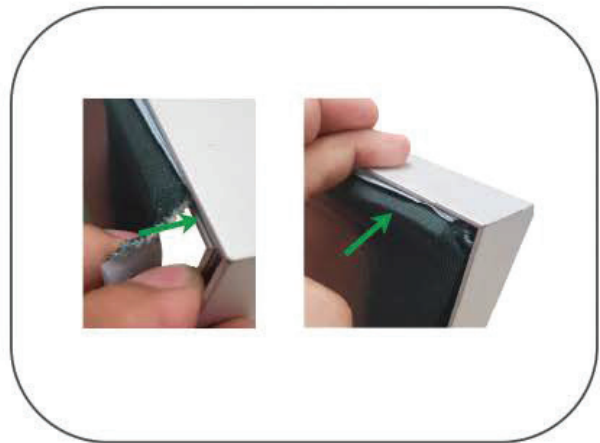
Place graphic over the front of the frame.



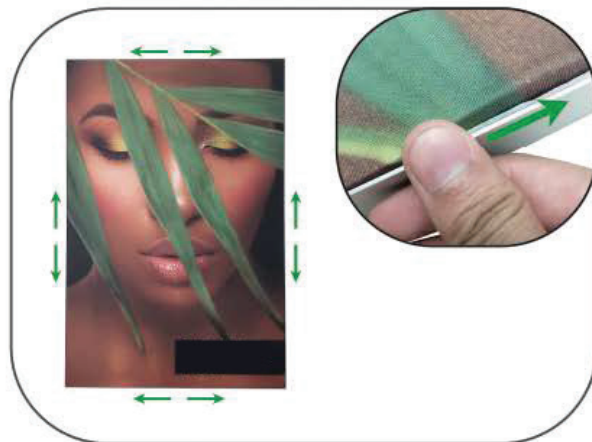
Begin inserting SEG beading at each corner.



Insert the silicone beading with the fabric folded over. The silicone beading should not be exposed.



Using your fingers, push both fabric and silicone beading completely into the extrusions channel.



Continue to push in the remaining silicone beading on each side.



Check the perimeter of the frame for any excess beading that hasn't been pushed in. Graphic should be taut.